

## Where Business Grows

We **produce** and **grow** things in Northeast Indiana. From **rich farmland** and **advanced manufacturing facilities** to **cutting-edge science**, we are focused on meeting the food needs of the world population. With access to **land, competitive utility rates, talent** and **broadband**, the opportunities for growth here are endless.

### • DID YOU KNOW?



Indiana generates **\$10 billion** in **crop** and **livestock** revenue per year.



Indiana is one of the **top five states** in the nation for **corn, soybean** and **ice cream** production.



Indiana saw a **22% increase** in food manufacturing establishments from 2016-2019.



Northeast Indiana has over **11,000 farms** covering **2.2 million acres** or 78% of the total land in the region.



Indiana is ranked **#1 in duck production**, **#2 in popcorn and egg layers** and **#3 in spearmint, tomato and egg production**.



The food and agriculture industry contributes **\$31 billion** to the state's annual **gross domestic product**.



“Companies are seeking to create resiliency in supply chains and get closer to customers and suppliers. Northeast Indiana's proven strength in **agriculture, food manufacturing** and **advanced manufacturing** position it well to compete for business.”

**MITCH FRAZIER**  
President | AgriNovus

### • MAJOR EMPLOYERS



# FOOD + AGRICULTURE MADE BETTER

## TALENT MADE BETTER

In Northeast Indiana we are **innovating today** for tomorrow's food needs. And we know that an **investment in talent** is crucial to success. By coupling our **certified training programs** with **higher-education degrees** specific to **food** and **agriculture**, we are ensuring local businesses have the **talent pipeline** they need.



Northeast Indiana employs **14,000 residents** in the **food** and **agriculture** industry, which is **8%** above the national average.



Worldwide, Purdue University ranks **9th** for its **agriculture and forestry programs** and **15th** for **university-issued patents**.



Regional universities have extensive **Agribusiness, Agricultural Education, Animal Science and Crop Science** and **Agromony** programs.

## BUSINESS CLIMATE MADE BETTER



**80% of the U.S. population** is within a 24-hour drive. I-80, I-90 and I-69 run through the region and I-65, I-70 and I-74 are **within a two-hour drive**.

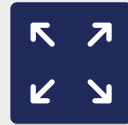


Indiana is home to **AgriNovus Indiana**, an organization focused on establishing Indiana as the nation's **agbioscience** hub.

## INVESTMENT MADE BETTER

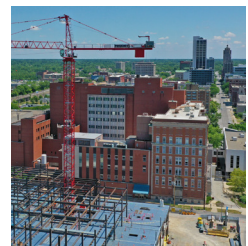
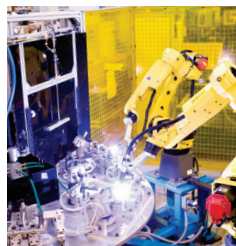
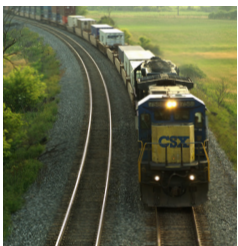


**Walmart** established its **first U.S. dairy processing facility** in Northeast Indiana, with a \$175 million investment.



**Dreyer's Grand Ice Cream** plans to invest over **\$145 million in an expansion** of its Fort Wayne production facility, anticipating up to 145 additional jobs by the end of 2024.

## A REGION MADE BETTER



The Northeast Indiana Regional Partnership is a business-led organization that offers free services to companies looking to expand or relocate.

Visit our website to contact us and learn more about why **Business is Made Better** in Northeast Indiana.

**NORTHEAST INDIANA**  
REGIONAL PARTNERSHIP



[NEINDIANA.COM/Food](https://neindiana.com/Food)



OCTOBER 2021

THE 11 COUNTIES OF NORTHEAST INDIANA

ADAMS >> ALLEN >> DEKALB >> HUNTINGTON >> KOSCIUSKO >> LAGRANGE >> NOBLE >> STEUBEN >> WABASH >> WELLS >> WHITLEY