

## Specialty Insurance Magnet of the U.S.

Northeast Indiana is where a **ripe business environment** primed for opportunity in the **specialty insurance** industry meets **top talent**. No matter the service or risk, odds are that Northeast Indiana has an insurance provider for it. And no matter **your needs**, odds are **Northeast Indiana has a solution**.

### • DID YOU KNOW?



**MedPro Group**, (a Berkshire Hathaway company), headquartered in Fort Wayne, Indiana, is the **world's leading provider** of professional liability coverage & risk solutions to healthcare providers.



**Ash Brokerage**, located in Fort Wayne, Indiana, is one of the **largest privately-held** insurance brokerages nationally.



Over **35 specialty insurance firms** have a presence in Northeast Indiana.



Headquartered in Fort Wayne, Indiana, **Brotherhood Mutual** insures more than **65,000 churches** and related ministries.



**Nearly 53%** of all jobs in the finance and insurance industry in Indiana are within the **insurance industry**, compared to 39% nationally.



The **Tax Foundation** ranked **Indiana as a top state** in the Midwest for its tax climate, outranking states like **Iowa** and **Connecticut**.



Image provided courtesy of MSKTD & Associates, Inc.

“Northeast Indiana is our showpiece to attract and retain talent. We want the best and brightest to come —and to stay. When we look at the momentum this community has, it's easy to see why we **chose to build and grow here**. Insurance is our business, but people are our passion. This place lets us unlock the potential of every individual and give back to the region in a meaningful way.”

**TIM ASH**

Chief Executive Officer | Ash Brokerage

### • MAJOR EMPLOYERS



# SPECIALTY INSURANCE MADE BETTER

## TALENT MADE BETTER

Northeast Indiana boasts **ten regional colleges and universities** that are part of the **Northeast Indiana Colleges and Universities Network**, a consortium focused on preparing a **highly educated workforce** to support **key professions** in the region.



Nearly 4,000 people are **employed** in Northeast Indiana's **insurance industry**.



The **University of Saint Francis** offers a bachelor's degree in **risk management** and **insurance**.



Each year, over **1,700 regional students** receive **MBAs** or degrees in **business** in Northeast Indiana.

## BUSINESS CLIMATE MADE BETTER



Indiana is home to a very friendly regulatory environment and has the **5th-lowest corporate income tax** rate in the country at **4.9%**, for states with corporate income tax.



The **Insurance Alliance of Northeast Indiana** is a group of top leaders in the industry focused on **growing the insurance sector** and **ensuring the talent pipeline** remains robust.

## INVESTMENT MADE BETTER

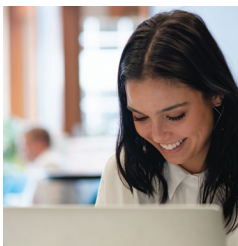


Ash Brokerage invested **millions** to move its **corporate headquarters** to downtown Fort Wayne, building **95,000 square feet** of office space for over 200 employees.



In 2021, **Brotherhood Mutual** completed an expansion of its Fort Wayne headquarters, creating up to **100 new jobs** over the next four years. The **\$25.5 million** investment includes additional office and meeting space.

## A REGION MADE BETTER



The Northeast Indiana Regional Partnership is a business-led organization that offers free services to companies looking to expand or relocate.

Visit our website to contact us and learn more about why **Business is Made Better** in Northeast Indiana.

**NORTHEAST INDIANA**  
REGIONAL PARTNERSHIP



[NEINDIANA.COM/SpecialtyInsurance](https://NEINDIANA.COM/SpecialtyInsurance)



OCTOBER 2021

THE 11 COUNTIES OF NORTHEAST INDIANA

ADAMS >> ALLEN >> DEKALB >> HUNTINGTON >> KOSCIUSKO >> LAGRANGE >> NOBLE >> STEUBEN >> WABASH >> WELLS >> WHITLEY