

The Heart of Automotive Innovation

The **automotive industry started in Northeast Indiana** with companies such as the Auburn Automobile Company, known for their design, engineering and innovation. Northeast Indiana has been at the **forefront of vehicle manufacturing for more than a century**, and the passion and dedication to the industry is still going strong. **Anchored by GM**, the vehicle industry in the region is focused on innovating for the future.”

• DID YOU KNOW?



Indiana is the **#2 state in the U.S.** for automotive production.



Nearly 80% of recreational vehicles in the U.S. are made in Northern Indiana, fueled by companies such as **THOR, Forest River** and **REV Group**.



Indiana ranks **3rd nationally for percent of gross regional product** attributed to motor vehicle manufacturing.



Indiana produces **1.3 million** cars and trucks each year, with a total value of approximately **\$102 billion**.



Northeast Indiana has **21 Tier 1 automotive suppliers**.



Northeast Indiana and Fort Wayne continue to have a very high concentration of vehicle manufacturing, making up more than **21% of manufacturing employment** in the region compared to **13% for the nation**.



“Bluffton, Indiana, **met all our requirements to support our complex manufacturing needs**, increase our presence in the Midwest and align with General Motors’ preference to have their supply base close to their facilities. The **Mayor’s office and the chamber were really helpful** in any way they could support us. It’s great to have that **personal relationship** in a small community.”

MARK ELLERBROCK
Plant Manager | Inteva Products

• MAJOR EMPLOYERS



VEHICLES MADE BETTER

TALENT MADE BETTER

The **vehicle industry is important** to **Northeast Indiana**, and the region recognizes it and **invests in the talent** necessary to ensure the local manufacturers and suppliers **thrive**. In Northeast Indiana we do **whatever it takes** for our companies in the vehicle industry to **excel**.



More than **28,000** people work in the Northeast Indiana vehicle industry.



Northeast Indiana **boasts many career academies** including Heartland Career Center and Fort Wayne Community Schools Career Academy.



Northeast Indiana is known for its top **engineering** programs at **Purdue University Fort Wayne** and **Trine University**.

BUSINESS CLIMATE MADE BETTER



Indiana was the first state in the Great Lakes region to establish **right-to-work** laws.



Northeast Indiana provides a **flat topography**, offers **competitive utility rates** and is within a three-hour drive of **Detroit**.

INVESTMENT MADE BETTER

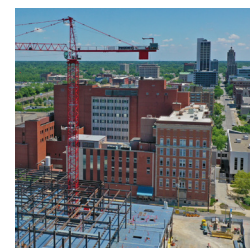
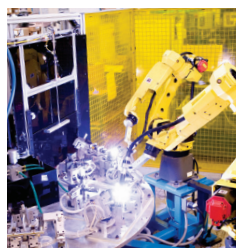


Inteva Products, a Troy, Michigan-based automotive supplier, announced a **\$42 million** expansion into Northeast Indiana in 2020.



General Motors has invested over **\$23 billion** in Northeast Indiana over the last decade.

A REGION MADE BETTER



The Northeast Indiana Regional Partnership is a business-led organization that offers free services to companies looking to expand or relocate.

Visit our website to contact us and learn more about why **Business is Made Better** in Northeast Indiana.

NORTHEAST INDIANA
REGIONAL PARTNERSHIP



[NEINDIANA.COM/Vehicles](https://neindiana.com/Vehicles)



OCTOBER 2021

THE 11 COUNTIES OF NORTHEAST INDIANA

ADAMS >> ALLEN >> DEKALB >> HUNTINGTON >> KOSCIUSKO >> LAGRANGE >> NOBLE >> STEUBEN >> WABASH >> WELLS >> WHITLEY