



**NORTHEAST  
INDIANA  
REGIONAL  
PROFILE**

# GROWING WITH VISION

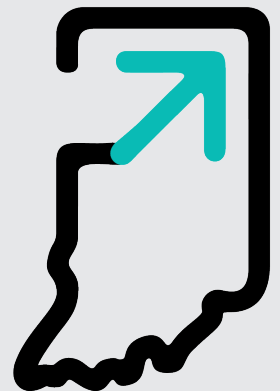
## FROM NEW MATERIALS TO FUTURE TECHNOLOGIES, COME DISCOVER WHY BUSINESS IS MADE BETTER IN NORTHEAST INDIANA.

I moved to Northeast Indiana in October 2021 because I could see, based on the investment and local leadership, that this community was ready to take even bigger risks. This region has a storied past of advanced materials and technologies, innovation and hard-working, dedicated people. From cutting-edge metals and alloys to polymers, the people in Northeast Indiana understand how to make things, and make them well.

There is a pride here and deep desire to be the best. Economic development is a continuous process that aims to create and accelerate economic momentum and the local leaders here understand this and are committed to the process. I invite you to come and learn more about Northeast Indiana and why we could be the logical choice for your business relocation or expansion. There are several reasons I'm confident my recent move was a good one.



**STÉPHANE FRIJIA**  
Northeast Indiana Regional Partnership



---

# TABLE OF CONTENTS

02.	INTRODUCTION
04.	REGIONAL PARTNERSHIP
06.	REGIONAL OVERVIEW
10.	TARGET INDUSTRIES
12.	KEY BUSINESSES
14.	INVESTMENTS
16.	INCENTIVES
18.	TALENT
20.	QUALITY OF LIFE
22.	CONTACT



# 11 COUNTIES. ONE REGION.

**WE EXIST SOLELY TO HELP YOU MAKE THE IDEAL CHOICE  
FOR YOUR BUSINESS EXPANSION OR RELOCATION**



## **WE OFFER:**

Single Point of Contact & Project Management

Connectivity to Key Resources

Site Selection Assistance

Data, Research & Economic Modeling

Workforce Assistance

Public Relations Assistance

We commit to supporting you from initial assessment to fully operational and beyond. We are confident our region is an ideal location for business, and we want you to come see why Northeast Indiana is where Business is Made Better.





## THIS IS NORTHEAST INDIANA.

The Northeast Indiana Regional Partnership’s mission is to drive business investment and strengthen the region’s global competitiveness and resiliency. We were founded in 2006, and are a public-private partnership with approximately 150 investors. We represent the 11 counties of Northeast Indiana and convene economic development partners across the public, private and academic sectors to collaborate and focus on sustaining a business-friendly

### OUR MISSION

Drive business investment and strengthen the region’s global competitiveness and economic resiliency.

environment. In Northeast Indiana, we come together to quickly design solutions to integrate your business into our community. We are a free service and exist solely to help you.

The Partnership represents 11 member counties: Adams, Allen, DeKalb, Huntington, Kosciusko, LaGrange, Noble, Steuben, Wabash, Wells and Whitley.

### OUR VISION

Be the location of choice for all businesses and people committed to be tomorrow’s market leaders.



# A STATE THAT MEANS BUSINESS



**Ranked #1 Best** in the Midwest and #6 nationally for 2022 **Best and Worst States for Business** by *Chief Executive*



**Ranked #1** nationally for 2022 **Top States for Business - Infrastructure** by *CNBC*



**Ranked #1** in the Midwest and #4 nationally for 2022 **Prosperity Cup** by *Site Selection Magazine*



**Ranked #2** nationally for 2022 **Top States for Business - Cost of Doing Business** by *CNBC*



**Ranked #1** in the Midwest and #7 nationally for 2021 **Top States for Doing Business by Area Development**



**Ranked #1** in the Midwest and #5 nationally for 2021 **Business Incentives Programs by Area Development**



**Ranked #1** in the Midwest and #9 nationally for 2022 **State Business Tax Climate Index** by *the Tax Foundation*



**Received AAA Issuer Credit Rating** by *S&P, Moody's and Fitch*

## STATE TAX DATA

**4.9%**

CORPORATE INCOME TAX

**7%**

SALES TAX

**3.23%**

INDIVIDUAL INCOME TAX

**0%**

GROSS RECEIPTS TAX, INVENTORY TAX, LOCAL SALES TAX

# A REGION MADE BETTER



## MIDDLE OF MILLIONS

Over **one million residents** live within a **50-mile radius** of Northeast Indiana.



## GROWING METRO

Fort Wayne, the state's **second-largest city**, is the second fastest-growing metro in the Great Lakes region.



## INVESTING IN OUR FUTURE

**\$1 billion** in capital investment in downtown Fort Wayne over the last decade.



## TALENT MADE BETTER

Over **200,000 graduates** from Tier 1 and Tier 2 universities live within **200 miles** of Northeast Indiana, including more than **40,000 students** and **8,500 graduates** annually from our ten local colleges and universities.



## HUB OF THE MIDWEST

Northeast Indiana allows access to more than **80%** of the U.S. and **20%** of the Canadian population within a 24-hour drive.



## LIFE AT A HIGHER STANDARD

Northeast Indiana offers a high-value quality of life that costs **44%** less than the national average and residential property tax is capped at just **1%**.



Minneapolis



Madison

Chicago



Des Moines



Fort Wayne



Indianapolis

Cincinnati

St. Louis

Louisville

Madisonville

Nashville



Memphis





# 11 COUNTIES MADE BETTER



# A STABLE, DIVERSIFIED ECONOMY



## DEFENSE + AEROSPACE

- Indiana has the highest concentration of manufacturing jobs in the nation among states competing for defense contracts.
- PricewaterhouseCoopers (PwC) named Indiana the 5th most attractive state for aerospace manufacturing in 2022.



## DISTRIBUTION + E-COMMERCE

- Indiana is ranked #1 nationally for 2022 Top States for Business – Infrastructure by CNBC.
- I-65, I-70 and I-74 are within a two-hour drive. I-69 is planned to connect Canada to Mexico, and I-80 and I-90 connect the east and west coasts.



## FOOD + AGRICULTURE

- The food and agriculture industry contributes \$31 billion to the state's annual gross domestic product.
- Indiana is home to AgriNovus Indiana, an organization focused on establishing Indiana as the nation's agbioscience hub.

# NORTHEAST INDIANA COMBINES ADVANCED MATERIALS, CUTTING-EDGE TECHNOLOGIES AND A HARDWORKING MIDWEST WORK ETHIC TO CREATE AN ENVIRONMENT WHERE COMPANIES THRIVE.

## MEDICAL DEVICE

- Indiana has one of the highest concentrations of life science companies in the U.S., employing more than 56,000 state residents.
- Medical materials manufacturer Fort Wayne Metals completed a \$50 million investment in people, buildings and equipment in 2020.



## SPECIALTY INSURANCE

- Nearly 53% of all jobs in the finance and insurance industry in Indiana are within the insurance industry, compared to 39% nationally.
- The Tax Foundation ranked Indiana as a top state in the Midwest for its tax climate, outranking states like Iowa and Connecticut.



## VEHICLES

- Indiana is the #2 state in the U.S. for automotive production.
- Nearly 80% of recreational vehicles in the U.S. are made in Northern Indiana, fueled by companies such as THOR, Forest River and REV Group.



# BUSINESS MADE BETTER

Northeast Indiana supports a range of businesses, from homegrown entrepreneurs to Fortune 500 companies. The region is filled with successful expansions, relocations and organically-grown companies. Our economy consists of diverse industries and is home to many corporate headquarters such as Zimmer Biomet and Steel Dynamics.











“Northeast Indiana has undergone a **major transformation** in the last decade. As the 11-county region continues this momentum, it’s a rewarding time to operate a business in this thriving area. The **business-friendly climate** and **skilled workforce** are why we do business in Northeast Indiana.”



**MARK MILLETT**

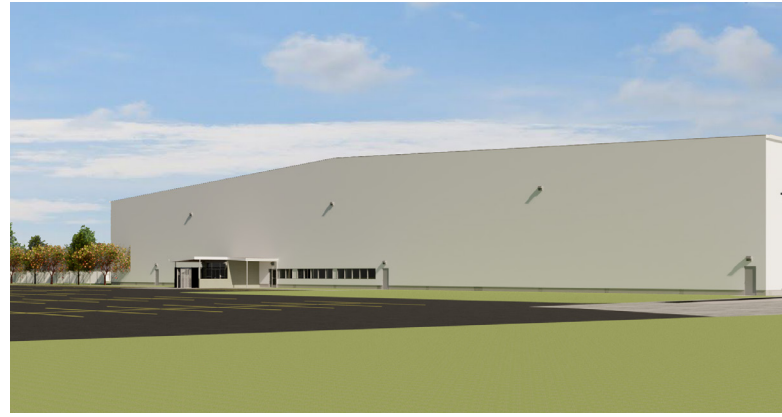
CHAIRMAN, PRESIDENT AND CEO | STEEL DYNAMICS





## GENERAL MOTORS

This auto giant completed a **\$1.2 billion** expansion in 2017, bringing the total investment in this **4.6 million-square-foot facility** to **\$2.7 billion**.



## TEIJIN

With the May 2022 announcement of a **\$110 million expansion**, Teijin has invested over **\$140 million** since 2018 and further strengthened the region as a **vehicle powerhouse**.



## ELECTRIC WORKS

With over **\$400 million** in investment to redevelop the former GE campus, Electric Works has gained international attention as a **transformational mixed-use redevelopment project**.



## BRIGHTMARK

This **renewable-focused** pioneer invested **\$108 million** in 2017 to enhance its technologies, capabilities and capacity.



## DREYER'S GRAND ICE CREAM

Producing ice cream brands you know and love for over 35 years, Dreyer's announced a **\$146 million** expansion to be completed in 2022.



## ORTHOPEDIC CAPITAL OF THE WORLD

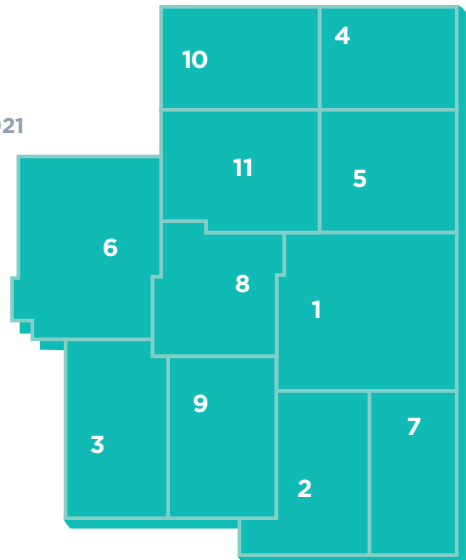
Led by investments in Warsaw, the **Orthopedic Capital of the World**, over **\$187 million** has been invested in the Northeast Indiana Orthopedic Industry in the last decade.



# INVESTMENT MADE BETTER

FROM MIXED-USE TO ADVANCED MANUFACTURING FACILITIES, WE ARE BOLDLY INVESTING BILLIONS IN OUR REGION.

01. SWEETWATER SOUND, \$76 MILLION, 2020
02. 20/20 CUSTOM MOLDED PLASTICS, \$66 MILLION, 2021
03. BIONUTRIENTS/PLUS5, \$56 MILLION, 2022
04. MILLER POULTRY, \$50 MILLION, 2020
05. PERPETUAL INDUSTRIES, \$40 MILLION, 2021
06. PARAGON MEDICAL, \$35 MILLION, 2021
07. REV/LANCE CAMPER, \$22 MILLION, 2021
08. IMPACT CNC, \$21 MILLION, 2022
09. INCIPIO DEVICES, \$14 MILLION, 2021
10. KZ RV, \$9 MILLION, 2019
11. ROBERT BOSCH, \$7 MILLION, 2021



NOTE: Dates above indicate either the "completed" or "announced" date. For example, 20/20 Custom Molded Plastics was \$66 million over four years, ending in 2021. Paragon Medical announced an investment of \$16 million in 2021 with an additional \$19 million over the next five years.

**And the wave of investment is just getting better.** From new sports stadiums to trails and industrial parks, Northeast Indiana has aggressive plans to show the world why it makes business better with plans to infuse **\$2 billion** of future private-public investment in the region's **Growing with Vision** economic development plan.





## NORTHEAST INDIANA MEANS BUSINESS

And our incentives are designed for you. With over 10 state incentives and countless local options, Northeast Indiana will do what it takes to make your business thrive.

- Bond Financing
- Build and Leaseback
- Cash Grants
- Certified Tech Park Funding
- County Economic Development Income Tax Assistance (CEDIT)
- Eligible Vacant Building Deductions
- Energy Credits
- Equipment Loans/Grants
- Façade Grants
- Grants of Local Income Tax (LIT) Funds
- Industrial Revenue Bonds
- Infrastructure Improvements
- Land Incentives
- Loan Guarantees
- Local Economic Development for Growing Economy (LEDGE)
- Low-Interest Loans
- Northeast Indiana Works
- Office Space
- Opportunity Zones
- Permitting & Legal
- Project-Investment Fund
- Revolving Loan Fund (RLF)
- Summit City Entrepreneur and Enterprise District (SEED)
- Tax Abatement
- Tax Increment Financing (TIF)
- Training Reimbursement

\*Programs vary by county



# STATE OF INDIANA INCENTIVES

## JOB CREATION AND BUSINESS INVESTMENT

### Economic Development for a Growing Economy (EDGE) Tax Credit

Provides a refundable tax credit to businesses that create new jobs that improve the standard of living for Indiana residents.

### Economic Development for a Growing Economy Tax Credit—Non-Resident (EDGE-NR)

Provides a non-refundable tax credit to businesses that create new jobs that are filled by residents from another state.

### Hoosier Business Investment (HBI) Tax Credit

Provides incentives to businesses to support job creation and capital investment and to improve the standard of living for Indiana residents.

## REDEVELOPMENT AND QUALITY OF PLACE

### Community Revitalization Enhancement (CRED) Tax Credit

Provides an incentive for investment in community revitalization enhancement districts.

### Industrial Development Grant Fund (IDGF)

Provides assistance to municipalities and other eligible entities with off-site infrastructure improvements needed to serve the proposed project site.

## INNOVATION AND ENTREPRENEURSHIP

### Data Center Sales Tax Exemption

Provides a sales and use tax exemption on purchases of qualifying data center equipment and energy to operators of a qualified data center for a period not to exceed 25 years for data center investments of less than \$750 million. If the investment exceeds \$750 million, the IEDC may award an exemption for up to 50 years.

### Headquarters Relocation Tax Credit (HQRTC)

Provides a non-refundable tax credit to a business that relocates its headquarters to Indiana.

### Small Headquarters Relocation Tax Credit (SHQRTC)

Provides a refundable tax credit to a small, high-growth business that relocates its headquarters or a number of employees equal to 80% of the company's total payroll to Indiana.

### Patent Income Tax Exemption

Certain income derived from qualified patents and earned by a taxpayer are exempt from taxation. The Tax Exemption for Patent-Derived Income defines qualified patents to include only utility patents and plant patents.

### Venture Capital Investment (VCI) Tax Credit

Provides a non-refundable tax credit to individuals or corporate investors who provide qualified debt or equity capital to Indiana companies, improving access to capital for fast-growing Indiana companies.

## RESEARCH AND DEVELOPMENT

### Research and Expense Credits

A taxpayer may be eligible for a credit on qualified research expenses.

### Research and Development Sales Tax Exemption

A 100% sales tax exemption for qualified research and development equipment and property purchased.

## SKILLS TRAINING

### Skills Enhancement Fund (SEF)

Provides assistance to companies to support training of employees required to support business growth in Indiana.

For more information on incentives, please visit: [www.iedc.in.gov](http://www.iedc.in.gov)

IN 2021

218

PROJECT  
ANNOUNCEMENTS

24,059

JOB  
COMMITMENTS

# NORTHEAST INDIANA Colleges and Universities

The Northeast Indiana Colleges and Universities Network will work with you to fill your pipeline. Businesses have access to more than 40,000 students and 8,500 graduates annually from over 240 degree and credential programs.



## TALENT MADE BETTER

“Beyond preparing a highly educated workforce, the Northeast Indiana Colleges and Universities Network also provides **training and professional development** opportunities to existing employees to help them perform better in their current roles, as well as programs and credentials that can help them take the next step in their careers. Each of our institutions in the Network wants to be a **key partner** with the region’s industries to help continue to attract and retain a **talented workforce**.”



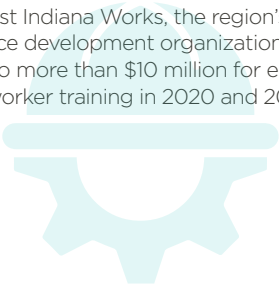
**DR. JEFFREY MALANSON**

DIRECTOR OF STRATEGIC PLANNING | PURDUE UNIVERSITY FORT WAYNE

WITHIN 200 MILES, WE HAVE OVER **200,000 GRADUATES** FROM MAJOR UNIVERSITIES SUCH AS PURDUE, NOTRE DAME AND MICHIGAN.

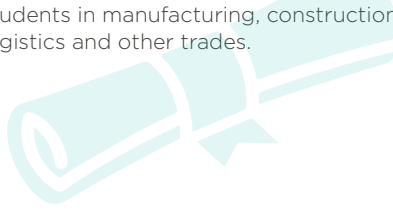
### WORKFORCE DEVELOPMENT

Northeast Indiana Works, the region's workforce development organization, provided access to more than \$10 million for employer-based worker training in 2020 and 2021.



### TRADE + CREDENTIALS

Northeast Indiana educational entities offer industry-recognized certificates and paid apprenticeships for high school students in manufacturing, construction, logistics and other trades.



### RIGHT-TO-WORK

Indiana was the first right-to-work state in the Great Lakes region of the U.S.



With high school training, technical programs and upscaling, Northeast Indiana has programs to ensure businesses have a robust talent pipeline. For more information, go to [www.neinworks.org](http://www.neinworks.org).



# LIFE AT A HIGHER STANDARD

## HOUSING

Balancing urban and suburban amenities with wide expanses of farmland, woods and lakes, Northeast Indiana provides a wide range of lifestyle options for its residents.

## SEASONAL

We boast four seasons in Northeast Indiana, giving you the opportunity to enjoy our 200+ lakes and hundreds of miles of trails.

## CULINARY SCENE

Welcoming creative chefs and locally-sourced farm-to-fork restaurants, we have become a foodie hot spot.

## SPORTS

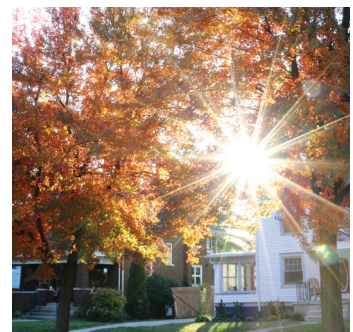
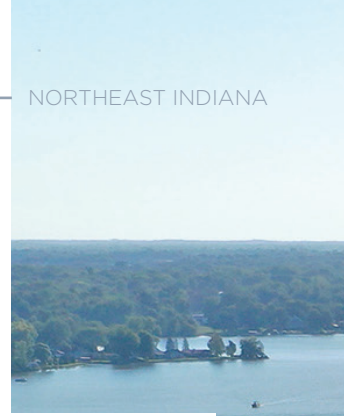
We have access to world-class minor league teams representing hockey, basketball, baseball and soccer, among others.

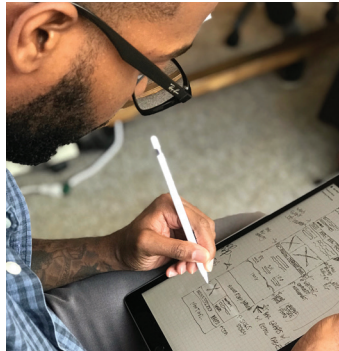
## ARTS

Highlighted by our arts campuses, galleries, murals and museums, the creative culture reaches every corner of Northeast Indiana.

## ENTERTAINMENT

While there is a small-town feel throughout Northeast Indiana, you are never too far from great dining and exciting nightlife.





”

**What do you like about Northeast Indiana?**

“In Fort Wayne, I’ve formed lasting friendships and ties, all while raising my daughter. What I like best about [Northeast Indiana] is that it allows you to live comfortably while giving you the resources you need to reach your goals. I’ve experienced life-altering events that I’ll treasure for the rest of my life. Indiana has been gracious to me, and I hope to continue to make a great impact and influence.”

**JAVON BELL****WEB DESIGNER & DEVELOPER | FOUNDER: @BELLAIRESTUDIO**



# BECOME PART OF THE CHANGE.

## NORTHEAST INDIANA HAS BECOME A PATH OF OPPORTUNITY AND INVITES YOU TO CAPITALIZE ON OUR MOMENTUM AND GROWTH.

We are building our future, and we are just getting started.  
Northeast Indiana is fertile ground for business growth.

We have the business climate, talent and infrastructure necessary  
for your business to thrive – and the region is committed to  
continuing the momentum. Experience the advantages and seize  
the opportunities.

Welcome to Northeast Indiana. **Pioneer Starts Here.**



## NORTHEAST INDIANA

### OFFICE:

200 East Main Street,  
Suite 910  
Fort Wayne, IN 46802  
Phone: 260-469-3469  
Fax: 260-469-3470



[www.neindiana.com](http://www.neindiana.com)





[www.neindiana.com](http://www.neindiana.com)