



# ALLEN COUNTY

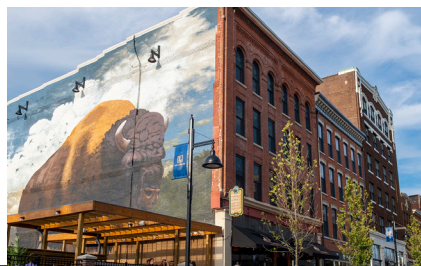


**GREATER  
FORT WAYNE INC.**  
METRO CHAMBER ALLIANCE

In the heart of Northeast Indiana, Allen County and its largest city, Fort Wayne, offer a diverse economy to meet the needs of new and existing businesses. With a long history in manufacturing that still holds true, Allen County has rapidly diversified with top employing industries including healthcare, specialty insurance, distribution and e-commerce. Life in Allen County is just as rewarding as the business landscape is welcoming. The counties easygoing demeanor, reliability and generosity continue to attract new people to the region.

## COMMUNITY ASSETS & ACCOLADES

- Fort Wayne named #1 city with the lowest cost of living by Niche.com in 2022 and #2 most affordable place to live in the U.S. by US News & World Report in 2021
- Fort Wayne included among 'Best Run Cities' by WalletHub.com in 2022
- Electric Works gained international attention as a transformational mixed-use redevelopment project with over \$400 million in redevelopment investment funds
- Named #2 fastest-growing metro in the Great Lake Region by the US Census Bureau in 2021



## FORT WAYNE | ALLEN COUNTY TALENT MADE BETTER

### POPULATION<sup>1</sup>

Total Population, 2021	388,608
% Change 2016:2021	5.2%
Median Age, 2021	36.0

### LABOR FORCE

Labor Force, May 2022 <sup>2</sup>	188,685
Median Household Income, 2020 <sup>1</sup>	\$61,039
% of Population Ages 20-64, 2021 <sup>1</sup>	56.8%
60-Mile Radius Labor Force, 2021 <sup>3</sup>	754,084

### EDUCATION SYSTEMS

School Districts <sup>4</sup>	4
Total Number of Students, 2022 <sup>5</sup>	65,507
High Schools, 2022 <sup>4</sup>	21
Middle Schools, 2022 <sup>4</sup>	26
Elementary Schools, 2022 <sup>4</sup>	59
Regional Colleges & Universities <sup>6</sup>	10
Approx. Regional Enrollment, Fall 2021 <sup>6,7</sup>	36,390

### EDUCATIONAL ATTAINMENT<sup>1</sup>



< Grade 9  
**4.2%**



Grade 9-12  
**5.9%**



High School  
**28.6%**



Some College  
**21.5%**



Assoc Degree  
**10.9%**



Bach Degree  
**19.5%**



Grad Degree  
**9.5%**

### MAJOR COLLEGES & UNIVERSITIES IN ALLEN COUNTY



# ALLEN COUNTY BUSINESS CLIMATE MADE BETTER

“Electric Works provides an **unparalleled opportunity** to step into a unique and desirable workspace; one that will, first and foremost, be better for our current team and also **position us as an employer of choice for an increasingly multigenerational workforce**. The campus environment provides our staff with quick access to education, medical and other resources. It is both appealing to our staff as we look to provide convenience, but also to collaborate with other complementary business in Fort Wayne.”

**Dan Starr | President and CEO**  
*Do it Best via Site Selector Magazine*

## ACCESSIBILITY<sup>9</sup>

Nearest MSA	Fort Wayne
Nearest International Airport	Fort Wayne International Airport (FWA)
Airport Runway Length	11,981 feet
Nearest Interstate	I-69, I-469
Nearest Port	Michigan City Port, 97 miles Toledo-Lucas County Port, 100 miles
Foreign Trade Zone Availability	FTZ-182

## UTILITIES<sup>9</sup>



Indiana Michigan Power, Northeastern REMC, Heartland REMC, Paulding Putnam REMC



The cities and towns in Allen County provide water, sanitary and storm sewer



NIPSCO



Comcast, Frontier, Lumen, Zayo

## MAJOR EMPLOYERS<sup>9</sup>



## COUNTRIES PRESENT IN COUNTY<sup>8</sup>



## TARGET INDUSTRIES<sup>9</sup>

- Advanced Materials
- Distribution & E-Commerce
- Food & Beverage
- Medical Device
- Specialty Insurance
- Vehicles

## INCENTIVES<sup>9</sup>

### » State Incentives

- Community Revitalization Enhancement District Tax Credit (CReED)
- Data Center Sales Tax Exemption
- Economic Development for a Growing Economy Credit (EDGE)
- Headquarters Relocation Tax Credit (HRTC)
- Hoosier Business Investment Tax Credit (HBI)
- Industrial Development Grant Fund
- Patent Income Tax Exemption
- Research & Development Incentives
- Skills Enhancement Fund (SEF)
- Venture Capital Investment Tax Credit (VCI)

### » Regional Incentives

- Next Level Jobs Hiring Assistance (Northeast Indiana Works)

### » Local Incentives

- Tax Abatement
- Eligible Vacant Building Deductions
- Tax Increment Financing (TIF)
- Facade Grants
- Low Interest Loans
- Summit City Entrepreneur and Enterprise District (SEED)

## Sources

<sup>1</sup> U.S. Census Bureau

<sup>6</sup> National Center for Education Statistics

<sup>2</sup> U.S. Bureau of Labor Statistics

<sup>7</sup> Ivy Tech Community College

<sup>3</sup> Hoosiers by the Numbers

<sup>8</sup> Indiana Economic Development Corporation

<sup>4</sup> Indiana Department of Education

<sup>9</sup> Greater Fort Wayne Inc.

<sup>5</sup> STATS Indiana

Scan code or call Allen County by contacting Ellen Cutter at Greater Fort Wayne Inc. at (260) 203-5734.



[www.neindiana.com/allen](http://www.neindiana.com/allen)

THE 11 COUNTIES OF NORTHEAST INDIANA

ADAMS >> ALLEN >> DEKALB >> HUNTINGTON >> KOSCIUSKO >> LAGRANGE >> NOBLE >> STEUBEN >> WABASH >> WELLS >> WHITLEY