



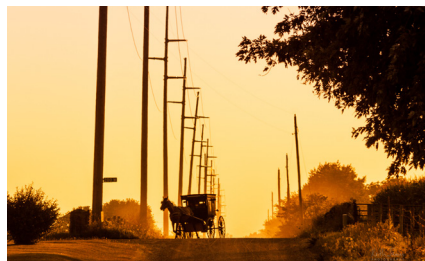
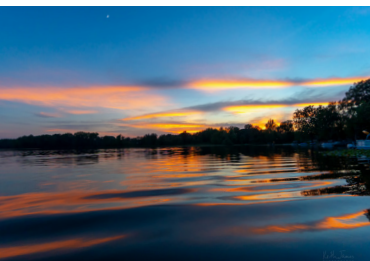
LAGRANGE COUNTY



LaGrange County is located on the Michigan border and is 30 minutes from the Ohio border, serving as a link between the major markets in Chicago, Indianapolis and Detroit. The I-80/90 Toll Road traverses LaGrange County and has an exit that intersects Indiana State Road 9.

COMMUNITY ASSETS & ACCOLADES

- Boasts the third-largest Amish settlement in the U.S. at approximately 41% of the county's population
- Over 80% of all recreational vehicles manufactured in the United States are made in LaGrange and Elkhart Counties
- Home to Indiana's Largest Fish and Wildlife area offering over 12,000 acres of seasonal hunting, fishing, hiking and paddling
- The LaGrange County Community Foundation, Crossroads United Way of LaGrange County, Chamber of Commerce, Parkview LaGrange Foundation, Purdue University Cooperative Extension Service and other interagency groups work side-by-side to ensure that the workforce has access to all the essentials that a caring community offers



LAGRANGE COUNTY TALENT MADE BETTER

POPULATION¹

Total Population, 2021	40,524
% Change 2016:2021	3.6%
Median Age, 2021	32.3

LABOR FORCE

Labor Force, May 2022 ²	21,331
Median Household Income, 2020 ¹	\$72,513
% of Population Ages 20-64, 2021 ¹	50.9%
60-Mile Radius Labor Force, 2021 ³	1,063,404

EDUCATION SYSTEMS

School Districts ⁴	3
Total Number of Students, 2022 ⁵	5,145
High Schools, 2022 ⁴	3
Middle Schools, 2022 ⁴	3
Elementary Schools, 2022 ⁴	7
Regional Colleges & Universities ⁶	10
Approx. Regional Enrollment, Fall 2021 ^{6,7}	36,390

EDUCATIONAL ATTAINMENT¹



< Grade 9
31.4%



Grade 9-12
7.6%



High School
30.1%



Some College
14.1%



Assoc Degree
5.4%



Bach Degree
7.6%



Grad Degree
4%

Note: Approximately 41% of the county's population is Amish, who often complete up to the 8th grade.¹



LAGRANGE COUNTY BUSINESS CLIMATE MADE BETTER

"There is little doubt that the employees of Farmers State Bank (FSB) know LaGrange County is an amazing place to work. FSB has an awesome combination of homegrown talent and employees that have come to us after working in large metropolitan areas. **Our employees love working in a community that works together to make sure we have an amazing quality of place.** Whether you are talking about LaGrange County or Northeast Indiana in general, we truly have a unique place to work, live and play. I am like many of our employees, I worked in a lot of different places before I found this place that I love to work and live in!"

Joe Urbanski | President and CEO
Farmers State Bank

ACCESSIBILITY⁹

Nearest MSA	Fort Wayne, 40 miles
Nearest International Airport	Fort Wayne International Airport (FWA), 47 miles or South Bend International Airport (SBN), 46 miles
Airport Runway Length	11,981 feet (FWA)
Distance to Interstate	10 miles
Nearest Port	Port of Indiana - Burns Harbor, 98 miles
Foreign Trade Zone Availability	FTZ-182

UTILITIES⁹



LaGrange County REMC, NIPSCO



Most of the cities and towns in LaGrange County provide water, sanitary and storm sewer



NIPSCO



Comcast, Lumen, Mediacom, LigTel

MAJOR EMPLOYERS⁹



COUNTRIES PRESENT IN COUNTY⁸



TARGET INDUSTRIES⁹

- Advanced Manufacturing
- Automotive
- Distribution & E-Commerce
- Food & Agriculture

INCENTIVES⁹

» State Incentives

- Community Revitalization Enhancement District Tax Credit (CReED)
- Data Center Sales Tax Exemption
- Economic Development for a Growing Economy Credit (EDGE)
- Headquarters Relocation Tax Credit (HRTC)
- Hoosier Business Investment Tax Credit (HBI)
- Industrial Development Grant Fund
- Patent Income Tax Exemption
- Research & Development Incentives
- Skills Enhancement Fund (SEF)
- Venture Capital Investment Tax Credit (VCI)

» Tax Abatement

» Tax Increment Financing (TIF)

» LaGrange County Project Investment Fund

» Industrial Revenue Bonds

» Local Economic Development for Growing Economy (LEDGE)

» LaGrange County Revolving Loan Fund

» Northeast Indiana Works

Sources

¹ U.S. Census Bureau

⁶ National Center for Education Statistics

² U.S. Bureau of Labor Statistics

⁷ Ivy Tech Community College

³ Hoosiers by the Numbers

⁸ Indiana Economic Development Corporation

⁴ Indiana Department of Education

⁹ LaGrange County Economic Development Corp.

⁵ STATS Indiana

Scan code or call LaGrange County by contacting Sherri Johnston at the LaGrange County Economic Development Corp. at (260) 499-4994.



www.neindiana.com/lagrange

THE 11 COUNTIES OF NORTHEAST INDIANA

ADAMS >> ALLEN >> DEKALB >> HUNTINGTON >> KOSCIUSKO >> **LAGRANGE** >> NOBLE >> STEUBEN >> WABASH >> WELLS >> WHITLEY