



WHITLEY COUNTY

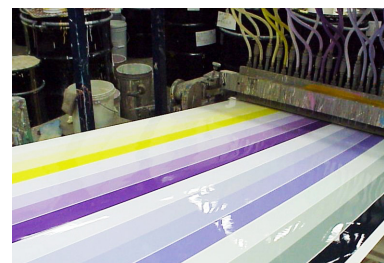
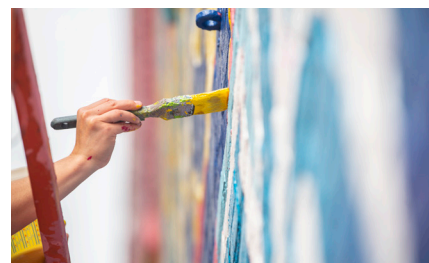
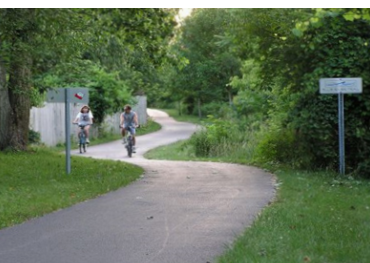


**WHITLEY
COUNTY** economic
development corp

Whitley County produces world-reknown products such as paint color strips made at Chromasource, submarine defense products made at Ultra Group: Mission Critical Systems, leading medical device products made at Micropulse and so much more. Whitley County's ideal location—situated between Fort Wayne, Indiana's second largest city, and Warsaw, the Orthopedic Capital of the World—makes it a strong asset to the Northeast Indiana region.

COMMUNITY ASSETS & ACCOLADES

- A prime location offering a maximum 3-day trip to anywhere in the country, making it an ideal place to start and grow a business
- Home to Whitko Career Academy, which provides training opportunities in manufacturing, technology and education
- Invested in the local school system with the addition of a new high school in the county's largest city, Columbia City, in May 2020
- Low property taxes make the County a desirable place to call home



WHITLEY COUNTY TALENT MADE BETTER

POPULATION¹

| | |
|------------------------|--------|
| Total Population, 2021 | 34,430 |
| % Change 2016:2021 | 2.8% |
| Median Age, 2021 | 41.4 |

LABOR FORCE

| | |
|---|----------|
| Labor Force, May 2022 ² | 17,858 |
| Median Household Income, 2020 ¹ | \$61,841 |
| % of Population Ages 20-64, 2021 ¹ | 56% |
| 60-Mile Radius Labor Force, 2021 ³ | 908,294 |

EDUCATION SYSTEMS

| | |
|---|--------|
| School Districts ⁴ | 3 |
| Total Number of Students, 2022 ⁵ | 5,759 |
| High Schools, 2022 ⁴ | 4 |
| Middle Schools, 2022 ⁴ | 4 |
| Elementary Schools, 2022 ⁴ | 6 |
| Regional Colleges & Universities ⁶ | 10 |
| Approx. Regional Enrollment, Fall 2021 ^{6,7} | 36,390 |

EDUCATIONAL ATTAINMENT¹



< Grade 9
2.6%



Grade 9-12
5.9%



High School
36.5%



Some College
20.7%



Assoc Degree
11.9%



Bach Degree
16.2%



Grad Degree
6.2%



WHITLEY COUNTY BUSINESS CLIMATE MADE BETTER

"It has been 10 years since Sterigenics chose Whitley County as its home. **Access to markets, solid infrastructure and government support at the local and state levels were all instrumental in our decision making.** As we are now mid-way through our expansion, the support has remained. This is a true testament to the core values of the community. We look forward to a long-term relationship in Whitley County."

Jeff Blakely | Director of E-Beam Operations
Sterigenics

ACCESSIBILITY⁹

| | |
|---------------------------------|--|
| Nearest MSA | Fort Wayne, 15 miles |
| Nearest International Airport | Fort Wayne International Airport (FWA), 30 miles |
| Airport Runway Length | 11,981 feet |
| Distance to Interstate | 9 miles |
| Nearest Port | Port of Indiana - Burns Harbor, 105 miles |
| Foreign Trade Zone Availability | FTZ-182 |

UTILITIES⁹



Duke Energy, Columbia City Utilities, Indiana Michigan Power, Northeastern REMC, South Whitley Utilities



Most of the cities and towns in Whitley County provide water, sanitary and storm sewer



NIPSCO



AT&T, Comcast, Frontier, Lumen, Mediacom

MAJOR EMPLOYERS⁹



80/20
BUILD YOUR IDEA



— MinebeaMitsumi Group —



LEAR
CORPORATION



Steel Dynamics

ULTRA

COUNTRIES PRESENT IN COUNTY⁸



TARGET INDUSTRIES⁹

- Agribusiness
- Defense & Aerospace
- Medical Device
- Steel Processing

INCENTIVES⁹

» State Incentives

- Community Revitalization Enhancement District Tax Credit (CReED)
- Data Center Sales Tax Exemption
- Economic Development for a Growing Economy Credit (EDGE)
- Headquarters Relocation Tax Credit (HRTC)
- Hoosier Business Investment Tax Credit (HBI)
- Industrial Development Grant Fund
- Patent Income Tax Exemption
- Research & Development Incentives
- Skills Enhancement Fund (SEF)
- Venture Capital Investment Tax Credit (VCI)

» Tax Abatement

» Tax Increment Financing (TIF)

» Grants/Bonds

» Northeast Indiana Works

Sources

¹ U.S. Census Bureau

⁶ National Center for Education Statistics

² U.S. Bureau of Labor Statistics

⁷ Ivy Tech Community College

³ Hoosiers by the Numbers

⁸ Indiana Economic Development Corporation

⁴ Indiana Department of Education

⁹ Whitley County Economic Development Corp.

⁵ STATS Indiana

Scan code or call Whitley County by contacting Dale Buuck at the Whitley County Economic Development Corp. at (260) 244-5506.



www.neindiana.com/whitley

THE 11 COUNTIES OF NORTHEAST INDIANA

ADAMS >> ALLEN >> DEKALB >> HUNTINGTON >> KOSCIUSKO >> LAGRANGE >> NOBLE >> STEUBEN >> WABASH >> WELLS >> WHITLEY